



Maths

Measurement: mass, capacity and length/ height

Time

Statistics

Computing

Learning how to keep safe online.

Exploring animation using scratch.

RE

What ways are places of worship important to believers? Children will visit a local church and observe the features of a church.

RSHE

Changing Me - recognising cycles of life in nature.

PE

Outdoor: Taking part in trials, teamwork, developing trust.

Indoor: Dance—exploring friendships

Art

Children will learn about portraiture. They will analyse the portraits of Tudor monarchs and compare Tudor portraits and selfies today. They will use photo editing software to create royal portraits.

Metacognition

How can working with others be helpful?

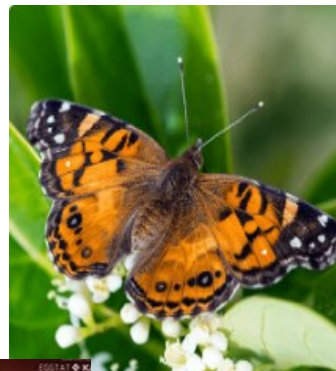
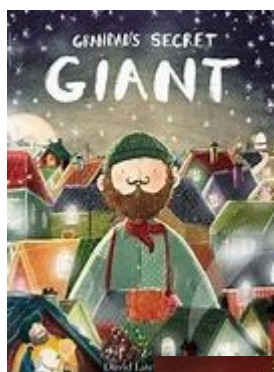
Text

Grandad's Secret Giant by David Litchfield

Visit -

Local visit to nearby Church

Year 2 Summer 2



English

Children will be writing their own version of the story with a focus on morals and acceptance of others. Children will be writing for different purposes, making simple additions, revisions and corrections, evaluate writing with the teacher and other pupils and re-reading to check that writing makes sense and that verbs to indicate time are used correctly and consistently.

Science

Children will learn about growth in animals by exploring the life cycles of some familiar animals. They will build on their learning about the survival of humans by identifying the basic needs of animals for survival, including food, water, air and shelter.

History

Children will look at the Victoria period on a timeline. They will use sources to find information about Queen Victoria and other female figures to discover what they achieved and why they are remembered.

Music

Myths and Legends (dynamics, timbre and tempo)

Ways in which you can support your child at home...

Below is a list of activities available on different websites we subscribe to as a school, for which your child has their own login and password. These activities have been selected for your child to complete this half term, as they support learning in class. If you have difficulty accessing any of the sites, please contact your child's teacher.




Butterfly Life Cycle

Complete the 2Do's on lifecycles and baby animals to find out more about their life cycle.

Purple Mash



Maths



NumBots

Children can practise their maths skills by logging onto NumBots through Wonde.

Places to visit

We are very fortunate to live in an area surrounded by many wonderful places to visit. To support your child's learning this half term, why not consider taking a trip to the National Portrait Gallery to see portraits across the years. We will be visiting Goodmayes Library to give the children the opportunity to choose new books to read in school.

Reading

Remember to listen to your child read every night for at least 15 minutes and write a comment in their reading record to show this daily. It is expected that children read six times a week. Your child will also greatly benefit from you reading a story to them. Goodmayes Library is a wonderful place to visit to encourage your child's love of reading. Children can borrow lots of lovely new stories and read a wide range of books.

Summer 2

This half term, the children are working towards achieving the target indicated below. The ultimate aim is for your child to be able to recall these facts **instantly**.

To add and subtract within 20.

Vocabulary

Take away,
minus, subtract

Hit the button

[Hit the Button - Quick fire maths practise for 6-11 year olds \(topmarks.co.uk\)](#)

Helpful hints:

- Include quick fire addition and subtraction in your daily routine.
- Encourage children to say the related number facts.
- Play target number. Make a number within 20 the target. If 15 is the target, how many ways can you make 15 using addition and subtraction.



Race to 20
Roll a die and place the same amount of counters in the tens frames.
First to 20 wins.

KindergartenKidsAtPlay.blogspot.com clipart: www.thislegindesigns.com