



Health, Safety and Welfare Policy

Mayespark Primary School

October 2022



Contents

Introduction

- 1 Policy Statement
 - 1.1 Professional Advice
- 2 Organisation and Responsibilities
 - 2.1 Governing Bodies of Community, Voluntary-Aided & Foundation Schools
 - 2.2 Head Teachers of Community, Voluntary-Aided & Foundation Schools
 - 2.3 School Health and Safety Co-Ordinator
 - 2.4 Line Manager/ Heads of Department
 - 2.5 Subject / Phase leaders
 - 2.6 Class Teachers
 - 2.7 Technical Staff / Technicians / Support Staff
 - 2.8 Caretaker / Premises Manager
 - 2.9 School Office Manager / Business Manager
 - 2.10 Asbestos Duty Holder
 - 2.11 Educational Visits Co-ordinator
 - 2.12 COSHH Co-ordinator
 - 2.13 Fire Wardens / Marshals
 - 2.14 First Aiders
 - 2.15 All Employees
 - 2.16 Safety Representatives
- 3 General Arrangements for implementing the Health, Safety and Welfare Policy
 - 3.1 Accident/Incident Reporting & Investigation
 - 3.2 Asbestos management
 - 3.3 Communicable Diseases
 - 3.4 Consultation with Employees
 - 3.5 Control of Contractors
 - 3.6 Control of Substances Hazardous to Health (CoSHH)
 - 3.7 Display Screen Equipment
 - 3.8 Driving



- 3.9 Electricity at Work
 - 3.10 Education Visits
 - 3.11 Fire Safety
 - 3.12 First Aid
 - 3.13 Gas Safety
 - 3.14 Health & Wellbeing
 - 3.15 Information, Instruction and Training
 - 3.16 Water hygiene management (Legionella)
 - 3.17 Letting of Premises
 - 3.18 Lifting Operations & Lifting Equipment (LOLER)
 - 3.19 Lone Working
 - 3.20 Manual Handling
 - 3.21 Medicines
 - 3.22 Monitoring – Audits & Inspections
 - 3.23 New & Expectant Mothers
 - 3.24 Noise at Work
 - 3.25 Personal Protective Equipment
 - 3.26 Playground / Play Equipment
 - 3.27 Ponds
 - 3.28 Risk Assessment
 - 3.29 Safety, Signs & Signals
 - 3.30 Security
 - 3.31 Smoking
 - 3.32 Slips and Trips
 - 3.33 Traffic Management
 - 3.34 Violence/Personal Safety of Staff
 - 3.35 Waste including Waste Electrical & Electronic Equipment (WEEE)
 - 3.36 Work Equipment
 - 3.37 Work Experience
 - 3.38 Working at Height
 - 3.39 Workplace (Health, Safety & Welfare) inspection
-
- 4 Access to Policy Statement

 - 5 Names of Key Staff

Health, Safety & Welfare Policy

Introduction

This policy is written within the framework of the Health and Safety at Work etc. Act 1974 and its subsequent Regulations.

It is to be read in conjunction with the Corporate Health, Safety and Welfare Policy of the London Borough of Redbridge. A copy of the Corporate Health, Safety and Welfare policy statement of intent (August 2021) should be displayed in the main office of Maintained schools. *(For Maintained schools only)*

It will be reviewed, added to, or modified from time to time and may be supplemented in appropriate cases by further statements related to the internal department of the school. Copies and subsequent amendments will be made available to all employees.

The success of this Policy depends on the active support of all employees to achieve its objectives.

The School recognises the need for a well-defined policy setting out the standards it aims to achieve for protecting the health, safety and welfare of staff, pupils and others.

This Health, Safety and Welfare Policy sets out the organisation and arrangements for achieving this aim including the detailed responsibilities for key staff.

Mayespark Primary School will ensure that it has access to competent technical advice on health and safety matters to assist us in meeting our objectives; we will do this by having a service level agreement with London Borough of Redbridge, the Corporate Health, Safety & Welfare Team.

1 Policy Statement

This School will provide a safe and healthy working and learning environment for staff, pupils and visitors, this will be achieved by implementing the health and safety objectives detailed in this Policy.

This School attaches great importance to the health, safety and welfare at work of all its employees and other users, particularly children, parents and visitors. This School will provide for its employees whilst working on the premises or elsewhere:

- Safe machinery and equipment, including vehicles;
- Articles and substances for use at work that are safe when properly used, stored,

handled and transported

- Information, instruction, training and supervision to enable employees to work safely without risk to their health;
- Premises and places of work that are well maintained, have safe access and egress for all and are without risk to health & safety;
- Adequate welfare facilities

Although the prime responsibility for health and safety under the Health and Safety at Work Act lies with employer, high standards of health, safety and welfare can only be achieved with the full co-operation and awareness of all staff.

..... (Head teacher) (Date)

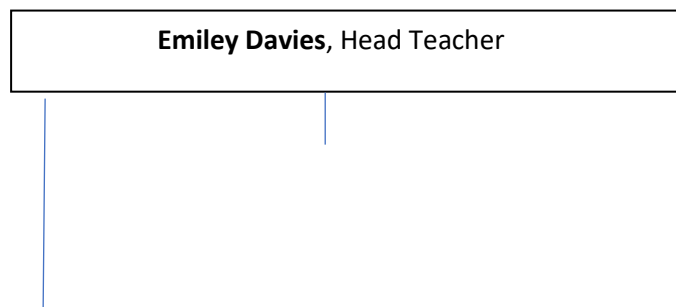
..... (Board of Governors) (Date)

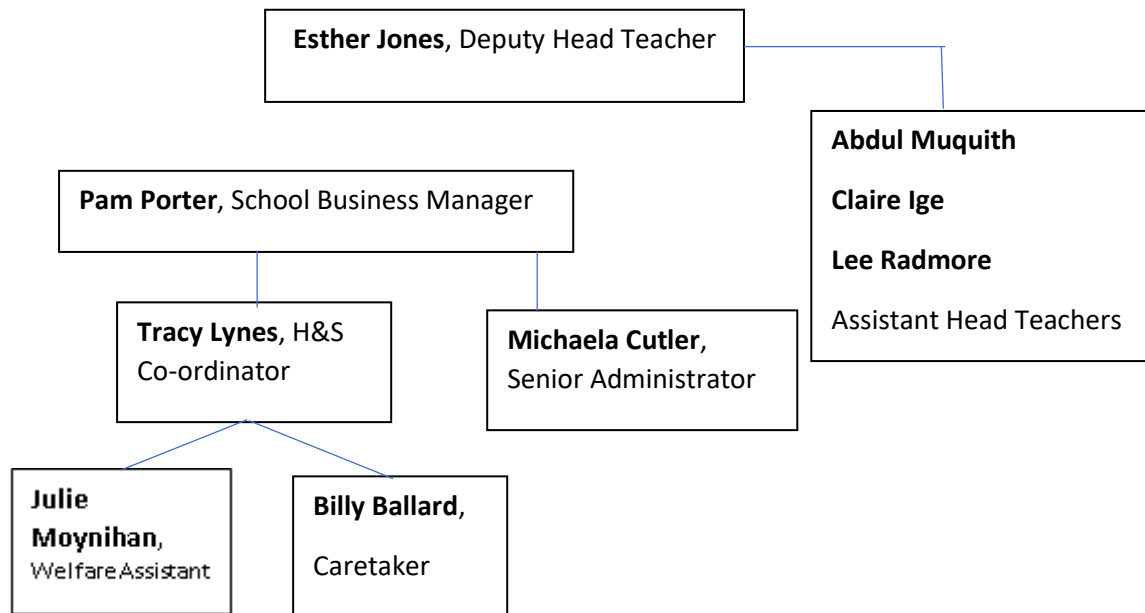
1.1 Professional Advice

Mayespark Primary School will engage the services of professionally qualified Health and Safety advisors who are available to assist the School in the fulfilment of its responsibilities by providing advice and guidance on matters of health and safety.

2 Organisation and Responsibilities

Health and Safety within the school is the responsibility of all staff, these responsibilities are outlined in sections 2.1 – 2.16. Key health and safety roles that have been designated to individual staff are outlined in the organisation chart.





- Health and Safety Co-ordinator Tracy Lynes
- COSHH Co-ordinator Tracy Lynes
- Educational Visits Co-ordinator Esther Jones
- Asbestos Duty Holder Emiley Davies
- DSE Assessor Tracy Lynes
- First Aiders See Appendix 1
- Fire Wardens Emiley Davies, Esther Jones, Abdul Muquith, Tracy Lynes, Lee Radmore, Pam Porter, Michaela Cutler

2.1 Governing Bodies of maintained, Voluntary Aided & Foundation Schools

Responsibility for health and safety differs between maintained Schools, and Voluntary Aided, Academies and Foundation Schools. Mayespark Primary School is a maintained school.

The employer for Maintained schools is the Local Authority who therefore have overall responsibility for health and safety compliance. These responsibilities cannot be devolved. The LA must provide oversight and monitoring and therefore these schools are required to provide details of all incidents and near misses to the Corporate Health, Safety & Welfare team.

The Governing Body should ensure:

- There are satisfactory arrangements in place to implement the Council's Health, Safety and Welfare Policy;



- There are adequate arrangements for managing activities where there is no Council procedure;
- That it considers the health and safety implications of its decisions;
- Sufficient resources are allocated to ensure that health & safety can be successfully managed;
- That suitable standards of health & safety are achieved and maintained within the school by monitoring the School's health and safety performance on an annual basis.
- That the School's Health & Safety Policy and procedures are annually reviewed to ensure their suitability.

2.2 Head Teachers

As outlined in 2.1, the ultimate responsibility for health and safety differs between Community Schools, and Voluntary Aided and Foundation Schools.

Head Teachers are responsible for:

- Complying with the health & safety decisions of the Corporate Director of People
- Producing the School's Health & Safety Policy. This shall include a statement of intent, individual health and safety responsibilities, and the organisation, arrangements and procedures;
- Establishing and maintaining systems within the School to ensure that health & safety is effectively managed;
- Appointing a Health & Safety Co-ordinator for the School;
- Ensuring that sufficient resources are allocated to enable health and safety to be successfully managed;
- The Corporate Health, Safety and Welfare Policy and ensuring this Policy is brought to the attention of all staff;
- Ensuring other health and safety information is communicated to relevant staff;
- Ensuring that accidents are investigated and reported using the established procedures;
- Ensuring that Trade Union Safety Representatives can carry out their functions including inspections and accident investigations and, where appropriate, that consultations take place with them. Where a Safety Representative has not been appointed by the union, ensuring that adequate arrangements exist for consultation with all staff on health, safety and welfare issues;
- Ensuring that all inspection reports are dealt with in an appropriate manner;
- Ensuring that all training needs are identified and met;
- Ensuring that assessments for all risks to health and safety are carried out and the significant findings recorded, with appropriate preventative measures being taken;
- Ensuring that new employees receive appropriate health, safety and welfare



information, instructions and training, including details of the Health, Safety and Welfare Policy, fire safety and other safety procedures;

- Ensuring that fire precautions and procedures are implemented (including fire drills);
- Liaising with contractors working at the premises;
- Ensuring appropriate arrangements are made regarding companies hiring school premises, where appropriate;
- Ensuring Health and Safety performance is monitored as specified in paragraph 3.24;
- Ensuring termly health and safety inspections of the School are carried out.

2.3 School Health and Safety Co-ordinator

Health and Safety Co-ordinator is responsible for:

- Establishing arrangements for dealing with health and safety matters such as:
 - Dissemination of health and safety information to all staff;
 - First aid;
 - Accident reporting;
 - Emergency evacuation procedures;
 - Ensuring accidents are investigated;
 - Ensuring health and safety matters raised by staff are dealt with;
 - Maintaining a central file of health & safety information relevant to the School;
- Liaising with Safety Representatives or other means of consulting with employees;
- Ensuring the implementation of the Safety Policy is monitored;
- Co-ordinating all aspects of Health, Safety and Welfare Policy and practice;
- Ensuring 'reportable' accidents are reported to the Council's Corporate, Health, Safety & Welfare Team.

2.4 Line Managers/ Head of Department

Line Managers are responsible for implementing the Health, Safety and Welfare Policy and procedures within their area of control. They will need to ensure that:

- Appropriate health & safety information is held within the Department/Section;
- The Health & Safety appropriate safety signs or notices are displayed;
- Assessments for all risks to health and safety are carried out, the significant findings recorded, and the control measures as detailed in the risk assessment are implemented;



- Relevant health and safety information is communicated to staff;
- All accidents occurring in the Department/Section are reported; the causes are investigated and an accident report form is completed;
- Reasonable arrangements for allowing Safety Representatives to carry out their functions are complied with;
- Health and safety training needs of staff within the Department/Section are identified and met, or reported to Head Teacher;
- Staff are aware of the fire procedures;
- New employees receive appropriate health and safety information, instruction and training, including Departmental safety procedures;

2.5 Subject leaders

Subject leaders are responsible for implementing the Health, Safety and Welfare Policy within their Department.

In particular, - Subject leaders will need to ensure that:

- Equipment within the Department is maintained in a safe condition. To achieve this the Subject leaders will ensure that the equipment is subject to regular inspections by competent staff and an annual maintenance programme.
- Termly inspections are undertaken to identify hazards and unsafe acts and omissions within the Department, and that an action plan is produced to ensure that any issues identified are resolved;
- New employees receive appropriate health and safety information, instruction and training, including Departmental safety procedures;
- Records are maintained of the Department's health & safety activities;

2.6 Class Teachers

The health, safety and welfare of students in classrooms and workshops is the responsibility of the class teacher. These guidelines also apply to student teachers / teaching assistants who must be made aware of their responsibilities by the class teacher.

A class teacher is expected to:

- Know the emergency procedures in respect of fire and first-aid and the special health and safety measures to be adopted in his/her own teaching areas and to ensure that they are applied;
- Be aware of, and follow, health and safety guidance;
- Exercise effective supervision of students and ensure that they know of the general emergency procedures in respect of fire and first-aid and the special

- safety measures of the teaching area;
- Give clear instructions and warnings as often as necessary (**notices, posters, hand-outs are not enough**);
 - Ensure that students' coats, bags, cases etc, are safely stowed away;
 - Carry out visual classroom daily checks and recorded monthly checks;
 - Integrate all relevant aspects of health, safety and welfare into the teaching process and if necessary give special lessons on health, safety and welfare;
 - Follow safe working procedures personally;
 - Ensure protective clothing, guards, specialist safe working procedures etc. are used when necessary;
 - Make recommendations on health, safety and welfare matters to the Health and Safety co-ordinator and/or Head Teacher.
 - Identify risks associated in the classroom and ensure risk assessments in place and communicated to all relevant staff.

2.7 Technicians/ Support staff

Technical staff are responsible for ensuring health and safety within the practical areas in the Departments in which they work, including Science laboratories, Design & Technology workshops, Art or Drama studios, IT and preparation rooms.

Technicians are responsible for:

- Undertaking regular workplace inspections of their area to identify hazards and ensure good housekeeping.
- Undertaking regular equipment inspections, keeping equipment in good working order and keeping relevant inspection/maintenance records.
- Ensuring all hazardous substances are used, handled, transported and stored in accordance with the information outlined in COSHH assessments and other information sources (e.g. CLEAPSS).

2.8 Caretaker / Premises Manager

The Caretaker is responsible for ensuring the health and safety of the site, more specifically:

- Ensuring that all fire exits are clear from obstruction and fire exit doors are unlocked prior to the building being occupied;

- Undertaking the weekly test of the fire alarm system;
- Undertaking the monthly test of the emergency lighting system;
- Undertaking the weekly test of the magnetic door release mechanisms;
- Checking the Every hazard reporting system at least daily, rectifying those issues within their authority and notifying the Headteacher/ Health and Safety Co-ordinator of any unresolved issues;
- Undertaking termly inspections of the communal areas of the school to identify hazards;
- Liaising with persons / companies hiring premises space to ensure that they are aware of evacuation procedures and routes, first aid provision, hazard and accident reporting procedures.

2.9 Business Manager/Assistant Business Manager

The Business Manager is responsible for ensuring the health, safety and welfare of the Office Staff; the Business Manager is responsible for ensuring that:

- A record is maintained of all premises related maintenance and inspection reports;
- Copies of completed accident forms are maintained. The forms will be retained for 3 years for adults and until the young person is 22 years old.

2.10 Asbestos Duty Holder

The Control of Asbestos Regulations places a duty on the "Asbestos Duty Holder" to manage any asbestos or asbestos containing materials located within the premises.

The Asbestos Duty Holder is generally the person (or persons) who have clear responsibility for the maintenance or repair of the premises e.g. Head Teacher and site manager.

The [Asbestos Duty Holder\(s\)](#) is Emiley Davies, Head Teacher and Billy Ballard, Caretaker.

Each School has an Asbestos Register that identifies whether asbestos or asbestos containing materials are present within the premises including the location, the type of asbestos and its condition.

The Asbestos Register is located in the school reception.

In addition, there is an Asbestos Information Poster, which outlines the processes to be followed prior to work commencing on the premises; and also, what to do if any suspected asbestos material is damaged in any way. This poster should be displayed in an area occupied by personnel who have cause to access the asbestos log and/or deal with contractors, e.g. caretaker's office or main school office.

The [Asbestos Information Poster](#) is displayed in the school reception.

It is the responsibility of the Asbestos Duty Holder to ensure that **anyone**, contractors or staff, who intend to work on the fabric of the building, read the Asbestos Information poster and consult the Asbestos Register prior to commencing work to ensure where they will be working is free from asbestos and asbestos containing materials, and that they sign the register to demonstrate they have consulted and understood it.

If, during the task, further work needs to be carried out at a different location, the Asbestos Register must be consulted again and be resigned and dated.

Note: It is a legal requirement for the duty holder(s) to have asbestos awareness refresher training at regular intervals.

2.11 Educational Visits Co-ordinator (EVC)

The EVC is responsible for ensuring that all trips and visits are approved in accordance with the Borough's Policy and that the visit leader completes a suitable and sufficient risk assessment.

2.12 COSHH Co-ordinator

The COSHH Co-ordinator is responsible for ensuring that data sheets for all hazardous materials are available and that all such materials are entered on the COSHH register and all such materials are retained in secure storage.

- Colleagues consider whether the hazardous substance they are intending to use could be eliminated altogether or replaced by a safer alternative prior to considering other control measures;
- Suitable & sufficient COSHH assessments are completed for all the hazardous substances used on site;
- No new hazardous substance is used by the school's employees or students until a suitable & sufficient COSHH assessment has been completed;
- The Borough's COSHH Do's and Don'ts poster is displayed in all locations where

hazardous substances are stored and/or used regularly;

2.13 Fire Marshals / Wardens

Fire marshals / wardens are responsible for:

- Familiarising themselves with their areas of responsibility, the escape routes and any problem areas;
- On hearing the fire alarm, they are responsible for:
 - Ensuring the safe evacuation of everyone in their area(s) of responsibility;
 - Checking all rooms in their area(s) of responsibility; including toilets, rest rooms and store rooms; to ensure that everyone has safely left the building.
 - Where possible, closing windows and doors as each room is checked;
 - Reporting to the Incident Control Officer to inform them that everyone has safely evacuated the building, or to report any problems;
 - Ensuring that nobody re-enters the building until the Incident Control Officer has stated it is safe to do so;
- Ensuring they are available, after the evacuation, to attend a debrief meeting to discuss the evacuation, identify any problems and share information.
- Monitoring to ensure that fire routes and exits are kept clear at all times in their area(s).

2.14 First Aiders

First Aiders are responsible for:

- Taking charge when someone is injured or falls ill;
- Administering first aid in the event of an injury;
- Calling for an ambulance, if required;
- Looking after first aid equipment and ensuring it is replenished;
- Keeping up to date with first aid training and ensuring they attend refresher training prior to the expiry of their first aid certificate.

2.15 All Employees

Although overall responsibility for health and safety rests with the Head teacher, all employees also have an individual responsibility for their own and other safety. Employees are required to:

- Take reasonable care for their own health, safety and welfare and that of other persons affected by their acts or omissions;

- Co-operate with their employer, so far as is necessary, to enable it to meet its responsibilities for health, safety and welfare;
- Be aware of, and follow, health and safety guidelines;
- Use work equipment provided correctly, in accordance with instructions and training;
- Inform their line manager of any work situations that represent a serious and immediate danger to health, safety and welfare. The School has a formal hazard reporting system, details of which are contained in Section 3.42;

In addition, female workers must notify their employer as soon as possible after they become pregnant in order that a risk assessment can be carried out to ensure the safety of the mother and unborn child.

(Note: Where there are other staff groups with health and safety responsibilities, these should be included.)

2.16 Trade Union Safety Representatives

In accordance with the Safety Representatives and Safety Committee Regulations, recognised trade unions can appoint Safety Representatives who will, if necessary, take up matters on behalf of employees. The names of workplace representatives will normally be found on the "Health and Safety Law – What you need to know" poster displayed in a convenient location on the premises. The training of Safety Representatives is the responsibility of the appropriate trade union. The School will provide its Safety Representatives with reasonable time off to undertake any training necessary and to undertake their duties.

3 General Arrangements for Implementing the Health, Safety and Welfare Policy

3.1 Accident/Incident Reporting & Investigation

An accident is an unplanned event that results in injury or damage.

A near miss is an unplanned event that does not result in injury or damage but had the potential to do so.

All incidents (with the exception of minor injuries) should be reported via online <https://sheasure.net/lbr/Portal/lbrSksjhvoiawr/Index>.

Due to potential additional reporting requirements, please ensure that these forms are completed as soon as possible, and no later than **7** days after the incident.

Where appropriate, accidents may also be investigated by the Health and Safety staff,

Insurance companies or the Health and Safety Executive.

3.2 Asbestos Management

The Control of Asbestos Regulations places a duty on the “Asbestos Duty Holder” to manage any asbestos or asbestos containing materials located within the premises.

The Asbestos Duty Holder is identified above at 2.10.

Control and safety management systems must include the following:

- Making sure that employees on the premises are fully aware that there are asbestos containing materials (ACM's) in the building (if applicable) and where it is located;
- Ensuring that only appropriately accredited and competent contractors work on site and wherever any work may involve disturbing the fabric of the building, the contractor must be made aware of the contents of the asbestos survey / register before they commence work.
- Contractors must be advised to assume that materials contain asbestos unless there is evidence to the contrary;
- Ensuring that relevant asbestos related information is held on site in a secure location and warning notices are displayed on site if relevant;
- Ensuring that the Asbestos Information Poster is displayed at the reception point.
- Ensuring all contractors, and any other person undertaking work on the fabric of the building, sign the asbestos register confirming that they have had access to the information contained in the register and that their risk assessments and method statements reflect fully this knowledge of the potential risks;
- Advising the Corporate Facilities Management Team where known asbestos or asbestos containing materials have become damaged or where planned works are programmed.

The duty holder must always obtain a signature from persons carrying out the work, confirming that they are appropriately trained for the works, which they will undertake. This is essential where works could affect asbestos containing materials.

3.3 Communicable Diseases

Due to the age and number of children present in educational schools it is not uncommon for them to contract a variety of communicable diseases.

Public Health England have produced 'Guidance on Infection Control in schools and other childcare settings'.

This document provides guidance on the prevention and spread of communicable diseases, and promotes a co-ordinated approach to the management of communicable disease in schools, colleges and nurseries.

The exclusion periods for common infectious diseases and skin infections are also included in this document.

A copy of the exclusion period chart is located in the Welfare room and in the cupboard outside the school office. The current guidance is located in the Welfare room.

3.4 Consultation with Employees

Under the Health and Safety (Consultation with Employees) Regulations and the Safety Representatives and Safety Committees Regulations an employer has a duty to consult with employees or their appointed representatives on matters of health and safety.

Employees will be consulted on the following:

- The introduction of any measure which may substantially affect their health and safety at work;
- Arrangements for getting competent people to help them comply with health and safety laws;
- Information on risks arising from their work, measures to reduce or get rid of those risks and what employees should do if they are exposed to a risk;
- The planning and organisation of health and safety training and the health and safety consequences of introducing new technology;

This School will consult with staff in the following ways:

Weekly briefings, annual Health & Safety INSET day training.

3.5 Control of Contractors

This School recognises that it has responsibilities in relation to the use of contractors.

In any client/contractor relationship, both parties will have duties under health and safety law. Similarly, if the contractor employs sub-contractors to carry out some or all the work, all parties will have some health and safety responsibilities.

The client in these circumstances is the head teacher/school.

The School will ensure that contractors are competent (i.e. they have sufficient skills and knowledge) to do the job safely and without risks to health and safety. The degree of competence required will depend on the work to be done.

The School and contractor are required to agree a safe method of working for the contracted work and preventative and protective steps that will apply when work is in progress. A risk assessment must be carried out to identify and address any potential hazards. Consideration should be given to those risks from each other's work that could affect the health and safety of the workforce or anyone else.

The School will ensure that contractors visiting their premises do not pose a risk to their own health and safety or that of others present within the School.

All contractors should report to the school office upon arrival.

The Caretaker is responsible for ensuring that all contractors on site are made aware of the asbestos register, fire safety and emergency evacuation procedures and any other relevant information as part of a formalised induction process.

Contractors in turn should notify the Caretaker of any hazards arising from their activities, which may affect the occupants of the School. The Catering staff are responsible for the safety of the kitchen & cleaning areas and must notify the Health and Safety Co-ordinator of any hazards.

3.6 Control of Substances Hazardous to Health

The Control of Substances Hazardous to Health (COSHH) Regulations 2002 impose duties on employers to protect employees who may be exposed to substances hazardous to health at work, and others who may be affected by such work.

COSHH Regulations cover chemicals, products containing chemicals, fumes, dusts, vapours, mists, gases, and biological agents (bacteria, fungi and viruses). If there is a hazard symbol displayed on the packaging then the contents are classed as a hazardous substance. COSHH also covers asphyxiating gases, biological agents that cause diseases such as Leptospirosis or Legionnaires Disease; and biological agents used in laboratories.

COSHH does not cover lead, asbestos or radioactive substances because they have their own specific regulations.

This School will ensure that COSHH assessments will be carried out on all hazardous substances prior to use. The COSHH assessment, which provides information on

specific hazards, first aid measures, personal protective equipment etc. will be reviewed as appropriate, or every five years, whichever is the sooner.

COSHH data sheets and risk assessments can be obtained by contacting

The Assistant School Business Manager who is the school's COSHH Co-ordinator.

3.7 Display Screen Equipment

The Display Screen Equipment (DSE) Regulations 1992 require employers to minimise the risks to employees who habitually use display screen equipment as a significant part of their normal work.

Other people, who use DSE only occasionally, are not covered by the requirements of the regulations, however, employers still have general duties under other health and safety at work legislation.

'Users', as defined by the Regulations, can be identified by completing the DSE User questionnaire.

Where users are identified, the following must be ensured:

- Workstations are assessed using the HSE workstation assessment checklist and the risks reduced, as applicable;
- Workstations meet the minimum requirements as outlined on the HSE checklist;
- Work is planned to allow adequate breaks or changes of activity;
- On request, eye tests are arranged, and a contribution made towards spectacles if they are required for DSE use; and
- Health and safety training and information is provided.

Completed User forms and DSE assessment checklists are on the IHASCO training suite.

When a DSE User requests an eye test, a completed copy of the Eye and Eyesight Test form should be completed and taken along to the appointment.

Further information can be found on the HSE website: www.hse.gov.uk/msd/dse

3.8 Driving

Under the Health and Safety at Work etc Act 1974, employers have a general duty to ensure the health, safety and welfare of employees and others who may be affected by their undertaking. This includes employees who may be required to drive as part of

their duties. They may be required to drive either their own private vehicle in the event of a medical emergency.

3.9 Electricity at Work

The Electricity at Work Regulations 1989 set out specific requirements on electrical safety. These regulations place a duty on employers to ensure that electrical systems are designed, constructed, used and maintained to prevent danger. 'Systems' includes all apparatus as well as the mains supply.

All portable electrical appliances should be visually checked before use. Attention should be paid to the condition of power cables and their connections, as these can easily be damaged which may introduce a hazard.

All portable electrical equipment should be visually inspected before use. Equipment used and moved regularly such as kettles, extension leads, vacuum cleaners etc should be subject to a detailed inspection and test by a competent person periodically. A written record of the tests, in the form of a logbook or register, should be maintained and be available for examination and the equipment itself should be marked with some form of identification and the date of the most recent test.

Portable Appliance Testing will be carried out by Alliance Facilities and the records are retained by the Assistant School Business Manager in the ASBM office

Fixed electrical installations should be inspected by a competent person at least every five years.

Mains Electrical Testing was carried out on 29th April 2019

and the records are retained by The Assistant School Business Manager

and held in the ASBM office.

Staff and pupils may not bring their own personal electrical appliances into the School unless they have had their earth-bond and insulation checked by a competent person

3.10 Educational Visits

The Health and Safety at Work Act 1974 places a duty on employers to ensure the health, safety and welfare of employees and others (pupils) who may be affected by the work activities. This includes all educational visits, whether local, national or international.

In order to safely manage educational visits *the* School follows the guidance provided in the LBR Education & Inclusion's document "Requirements for Educational Visits" using the online educational visits software package "Evolve" as applicable.

In accordance with this guidance this School has appointed an Educational Visits Co-ordinator, and developed a school Educational Visits Policy based on the DFE and Children's Services Guidance.

The Educational Visits Co-ordinators (EVC) is Esther Jones, Deputy Head Teacher. The school Educational Visits Policy is accessible on the Every system.

No educational visit will be allowed to proceed unless an educational visits risk assessment has been completed and the visit has the approval of the Head Teacher and (for adventurous activities, residential visits and international visits) the local authority.

3.11 Fire Safety

The Regulatory Reform (Fire Safety) Order 2005 places duty on employers to conduct a fire risk assessment and take reasonable steps to reduce the risk from fire.

Each School should have a "Responsible Person" who is ultimately responsible for fire safety and who may have other competent people to assist them to carry out their duties. These include undertaking a Fire Risk Assessment and ensuring that any significant findings identified are acted upon, preparing an Emergency Evacuation Plan, and Personal Emergency Evacuation Plans (PEEPs) for staff or pupils with impaired mobility.

The Responsible Person for this School is Emiley Davies, Head Teacher.

The current Fire Risk Assessment, Emergency Evacuation Plan and any Personal Emergency Evacuation Plans (PEEPs), can be found in the fire safety folder that is located in the Assistant School Business Manager's office.

'Fire Action Notices' are displayed throughout the premises advising the actions to be taken on discovering a fire/on hearing the alarm.

Fire Drills are conducted on a termly basis and a record of the time taken to evacuate the premises and any comments arising should be reported to the Governing Body.

All staff have a duty to be aware of the fire and emergency procedures, to ensure that all escape routes and fire exits are kept clear, and to report any defective or damaged fire- fighting equipment, such as fire extinguishers.

Any fire that occurs within the premises, however minor, must be reported to the Head Teacher and to the Corporate Health, Safety & Welfare Team using the LBR incident reporting system – <https://uk.sheassure.net/lbr/Portal/lbrSksjhvoiawr/Index>

The competent people for fire safety at this school are as follows:

- a. Calling the Fire Brigade is the responsibility of Tracy Lynes, Assistant School Business Manager
- b. Liaising with fire brigade is the responsibility of Emiley Davies, Head Teacher
- c. Collecting class registers, staff and visitor books is the responsibility of Michaela Cutler, Senior Administrator, and office staff.
- d. a list of first wardens are kept in the ASBM office.
- e. Organising fire drills is the responsibility of Tracy Lynes
- f. Organising fire safety training is the responsibility of Tracy Lynes
- g. Periodic inspections of the fire alarms, emergency lighting, fire door magnetic holders are carried out by Penton Fire and Security
- h. Weekly checks of the fire alarm call points, emergency lighting and fire door magnetic holders are carried out by Billy Ballard
- i. Annual inspection of the fire extinguisher and firefighting equipment is carried out by DDM Fire Safety

3.12 First Aid

The Health and Safety (First-Aid) Regulations set out a duty of care on employers to provide adequate and appropriate first aid provision for employees.

Staff nominated to administer first aid will attend one of the following courses: first aid at work, emergency first aid, and paediatric first aid. *(Which ever is deemed most appropriate).*

A first aid assessment of needs has been undertaken by Tracy Lynes

using a First Aid Needs Assessment Form. A copy of the completed form is located in the ASBM office.

The nominated persons with first aid responsibilities for this School are:

Name	Qualification e.g.	Location	Extension
------	--------------------	----------	-----------



	FA, EFA, PFA		Number
Julie Moynihan	FAAW	Annexe A1	1301
Michaela Cutler	FAAW	G1 School Office	1102
Panna Choudhury	PFA	F42	
Davinder Barn	PFA	G14	1405
Khaleda Khanom	PFA	G24	1401
Sheila Permal	PFA	G10	1108
Jo Byrne	PFA	F52	1203
Berachah Benedict	PFA	G6	1402
Gurmeet Dhingra	PFA	Y1 classes	
Firdous Khawaja	PFA	A8	1408
Najmun Patel	PFA	Y5 classes	

The First Aid Boxes for this School are sited in the following locations: Welfare room-Annexe A1, inside of Door 1, school office and reception classes. The person responsible for maintaining the First Aid boxes is: Julie Moynihan.

Notices are displayed throughout the school advising of the locations of first aid boxes and the names of first aiders.

Any accidents requiring first aid must be recorded and where relevant reported to the health and safety co-ordinator/ first aiders.

Further information can be found at <https://www.gov.uk/government/publications/first-aid-in-schools>

3.13 Gas Safety

Under the Gas Safety (Installation and Use) Regulations, any work on gas systems and appliances must only be undertaken by persons registered with the Gas Safe register.

Tracy Lynes is responsible for ensuring that gas appliances will be regularly serviced by competent persons.

Annual servicing will be carried out by Oakray. Commercial catering gas inspections are carried out by J. Scott, records are maintained by Tracy Lynes and held in the ASBM office.

If you smell gas:

- Do not use any naked flames/other ignition sources

- Open doors and windows
- Contact the gas board
- Do not switch on or off the lights or any portable switch appliance switch
- Shut off the gas
- Evacuate the premises, if appropriate

Any gas matters within the school, must be reported to the Health and Safety Champion, Site Manager and the Corporate Facilities Management Team on (0208 708 3528). The responsible person/ nominated person must contact the Gas supply/ company immediately.

3.14 Health & Wellbeing of Staff

The Health and Safety at Work Act 1974 establishes a duty for employers to ensure the health, safety and welfare of employees, whilst at work. This includes not only their physical health, but also their mental health and wellbeing. The Management of Health and Safety at Work Regulations 1999 require a general risk assessment of all risks in the workplace, and this will include the risk to staff from stress.

The HSE defines stress as *“the adverse effect people have to excessive pressure or other types of demand placed on them”*.

3.15 Information, Instruction and Training

The Health & Safety at Work Act 1974 establishes the duty of the employer to supply employees with such information, instruction, training and supervision as necessary to ensure their health and safety at work.

This School is committed to providing all staff with the appropriate information, instruction, training and supervision to enable them to undertake their duties safely and without risk to themselves or others.

Induction training will be provided to all new employees appropriate to their role.

Health and safety training, and refresher training will be organised for staff as appropriate, and training records (including induction) will be kept.

Health and safety training records are kept by Tracy Lynes via iHASCO.

3.16 Legionella

The Control of Substances Hazardous to Health Regulations relates to the risk from

hazardous micro-organisms, including Legionella. Under these Regulations, risk assessments and the adoption of appropriate control measures are required to be put in place.

The school will ensure that an adequate risk assessment of the water systems in its buildings is carried out; and will identify and assess the risk of exposure to Legionella bacteria from work activities and water systems on the premises and any necessary precautionary measures.

The Legionella risk assessment has been undertaken by Primec and is located in ASBM office.

All water systems should be subject to monitoring, inspection and testing at regular intervals by a competent person. The written records of the risk assessments, monitoring, inspections and testing, in the form of logbook or register, should be maintained and should be retained for at least 5 years.

Regular monitoring, inspection and testing will be carried out by Primec. Records will be maintained by Primec and log book held in ASBM office.

Any queries regarding Legionella risk management should be referred to the Corporate FM Team on ((0208 708 3528).

Further information can be found on HSE website www.hse.gov.uk/legionnaires

3.17 Letting of the School Premises

Employers have a general duty under the Health and Safety at Work Act 1974 to ensure the health, safety and welfare of their employees at work, and others who are not employees but use their premises.

The Act also requires that when parts of the building are used by other organisations that there is "co-operation and co-ordination" between the two parties for the purposes of health and safety.

- a. This School will ensure that the appropriate health and safety information is passed to the hirer, using the Letting of Educational Premises Checklist.
- b. Tracy Lynes is responsible for providing the hirer with appropriate health and safety information and ensuring they sign a copy of the lettings checklist.

- c. Completed checklists are located in ASBM office.
- d. Where the hirer is undertaking activities that require personal qualification or proficiency (for example martial arts), the school will check to ensure competence of the instructor prior to the letting being agreed.
- e. Lettings are organised by Tracy Lynes, after school clubs (by external providers) by Claire Ige..
- f. Letting documents are located in ASBM office.

3.18 Lifting Operations and Lifting Equipment Regs. (LOLER)

LOLER applies to any item of lifting equipment including new or existing equipment, second-hand or leased equipment and the accessories used for lifting.

- Lifting equipment is work equipment designed and used for lifting and lowering loads; such as cranes, lifts, and hoist; and includes its attachments used for anchoring, fixing or supporting it.
- Accessories for lifting are work equipment for attaching loads to machinery for lifting, such as chains, ropes, slings, hooks, shackles and eyebolts.
- Load includes a person (lifts in schools).

Generally, the Regulations require that lifting equipment provided for use at work is:

- Strong and stable enough for the use and marked to indicate safe working loads;
- Positioned and installed to minimise any risks;
- Used safely, i.e. the work is planned, organized and performed by competent people; and
- Subject to ongoing thorough examination and, where appropriate, inspection by competent people.

This School requires that all lifting equipment be clearly marked to indicate the safe working load. Where the safe working load is affected by the configuration of the equipment, then the equipment must be marked to indicate its safe working load in each configuration. Accessories for lifting, such as slings, must also be marked with their safe working load.

It is the responsibility of Tracy Lynes to ensure all lifting equipment and accessories are marked with the safe working load.

This School also requires that all lifting operations are properly planned by a competent person, appropriately supervised and carried out safely. This includes undertaking either a generic or specific risk assessment of the operation, as appropriate.

It is the responsibility of Tracy Lynes, ASBM to assess, plan and supervise all lifting operations to ensure they are undertaken safely.

Staff must not use lifting equipment unless they have received appropriate training and must use the equipment in an appropriate manner, according to the information received in training and from their line manager.

It is the responsibility of Tracy Lynes to arrange staff training and refresher training as appropriate, and to ensure that records of staff training are maintained.

This School requires that all lifting equipment undergoes a thorough examination by a competent person before it is first put into use, unless the equipment has an EC declaration of conformity made not more than 12 months before the equipment is put into service or it is accompanied by physical evidence of its last thorough examination.

Ongoing thorough examination must also be undertaken to ensure that lifting equipment remains safe for use. In the case of lifting equipment for the lifting of persons or an accessory, a thorough examination is required at least every 6 months, for other lifting equipment a thorough examination is required at least every 12 months.

The school currently do not use any lifting aids apart from the caretaker's trollies, and the passenger lift. The passenger lift is regularly maintained by Griffin Lifts and is inspected six monthly by Zurich Insurance.

All defective lifting equipment or lifting accessories must be reported and the equipment taken out of use until the defect is rectified.

All defects must be reported via the Every hazard reporting system.

Further information and guidance on LOLER can be found in the following documents:

- HSE INDG 290 (rev1), Lifting equipment at work- A brief guide.
- HSE INDG 422, "Thorough examination of lifting equipment – a simple guide for employers".

3.19 Lone Working

The Health and Safety at Work Act 1974 places a duty on employers to ensure the health, safety and welfare of employees. The Management of Health and Safety at Work Regulations 1999 require employers to make a suitable and sufficient assessment of the risks to health and safety of employees to which they are exposed whilst at work. This will include the risks to staff from lone working.

Lone workers have been defined by the HSE as 'those who work by themselves without close or direct supervision'. Lone workers are found in a wide range of situations, and can be divided into those who work at fixed Schools (where only one person is on site, where people work separately from others, or where people are working out of normal working hours), and those who are mobile workers, working away from their main working base.

This School will ensure that all lone working activities are identified, and the risks from such lone working activities are assessed and control measures identified and implemented to minimize the risk to the health and safety of staff.

It is the responsibility of Tracy Lynes to identify all lone working activities within the school and ensure that a suitable risk assessment is undertaken for each.

The responsibility for undertaking lone working risk assessments and ensuring the outcomes are communicated to the lone workers lies with Tracy Lynes.

It is the responsibility of Tracy Lynes to ensure lone workers have received adequate lone working information and training, and for keeping training/briefing records.

It is the responsibility of all staff to follow the defined lone working procedures and safe systems of work, and to report immediately any problems or concerns to their line manager.

All staff that work alone must be competent to carry out the activities they are engaged in, must have received sufficient information to enable them work alone safely and to be able to summon help and assistance if required.

Further guidance is available in the HSE document Working alone (INDG73).

3.20 Manual Handling

The Manual Handling Operations Regulations apply to a wide range of manual handling activities, including lifting, lowering, pushing, pulling or carrying. These regulations place specific duties on employers and employees.

Tracy Lynes will be responsible for carrying out risk assessments for all manual handling activities, which constitute a significant risk of injury to staff and to update and review as necessary.

Employers are required to:

Avoid the need for manual handling, so far as is reasonably practicable;

Assess the risk of injury from any hazardous manual handling that can't be avoided; and **Reduce** the risk of injury from hazardous manual handling, so far as is reasonably practicable.

Employees are required to:

- Follow appropriate systems of work laid down for their safety;
- Make proper use of equipment provided for their safety;
- Co-operate with their employer on health and safety matters;
- Inform the employer if they identify hazardous handling activities;
- Take care to ensure that their activities do not put others at risk.

All staff members involved in manual handling will be given suitable and sufficient information, instruction, training and supervision. Training will be recorded, monitored and reviewed.

Training records will be maintained by Tracy Lynes via the iHASCO system.

If a member of staff develops any medical / physical condition, the responsible person should be made aware immediately. A specific risk assessment must be carried out to cover the activities/tasks and control measures should be taken accordingly.

Further advice can be found on the HSE website www.hse.gov.uk

Manual handling- Manual Handling Operations Regulations 1992 - L23 (Fourth edition) Published 2016.

3.21 Medicines

In general, medicines should not be brought into school. However, if a pupil has a medical condition that requires regular medication during the school day or medicine in the event of an emergency, then arrangements for administration must be made between the School and the pupil's parent/carer. These arrangements must be in the form of an agreed Care Plan.

A list of pupils with medical conditions and their care plans can be found on the Admin drive, Mayeswork, Academic Year 2021-22, Medical documentation.

Prescribed medicines are stored in the cupboard outside the school office.

Protocols for pupils with serious medical conditions should be kept in the green medical box in the classroom, copies are held in the school office and care plans uploaded to Integris and CPOMs. All protocols and care plans have up to date photos.

Supply teachers will be made aware of any pupils with medical needs as each class has photographs of children with directions to find further information in the class medical box.

All staff involved in the administering of medicines should be appropriately trained, e.g. epi-pen training.

Appropriate records in relation to the administration of medicines should be maintained at all times. A Medication Administration Permission Form must be completed and signed by the parent or guardian and any medication administered should be entered on CPOMs.

More detailed information can be found in the Department for Education document 'Supporting pupils at school with medical conditions'

3.22 Monitoring – Audits & Inspections

In order to ensure health and safety arrangements are working and that risk control measures are effective and are being maintained, it is necessary to monitor health and safety performance. Monitoring also ensures that lessons are learnt from any incidents, accidents or causes of ill health.

This School will carry out the following monitoring:

- Daily checks by the Caretaker in addition to detailed termly inspections of the school (these could be in conjunction with inspections by School safety representatives). A written record of identified items must be kept;
- Routine equipment maintenance checks either carried out by staff of the School or by external contractors, as appropriate, including access equipment, fire extinguishers, fume and dust extraction systems, portable electrical appliances, PE equipment including climbing frames etc;
- Investigations of incidents, accidents, causes of ill health and complaints as appropriate to the circumstances;
- Reviewing accident statistics to identify causes of accidents; and
- Reviewing audit reports detailing the performance of the School's health & safety management system.

Records of maintenance checks, inspections etc are located in:

Record Type	Location	Responsible Dept/Person
<i>Accident records</i>	<i>Assistant School Business Manager's Office</i>	<i>Tracy Lynes</i>
<i>Asbestos Register</i>	<i>School Reception</i>	<i>Tracy Lynes</i>
Risk Assessments	<i>Assistant School Business Manager's Office</i>	Tracy Lynes
Fire Equipment Inspections	<i>Assistant School Business Manager's Office</i>	Billy Ballard/Tracy Lynes
DSE Register	<i>Assistant School Business Manager's Office</i>	Tracy Lynes
Daily & Weekly H&S Checks	<i>Assistant School Business Manager's Office</i>	Billy Ballard/Tracy Lynes
Pupil Medication Records	<i>Assistant School Business Manager's Office</i>	Tracy Lynes

3.23 New & Expectant Mothers

The Management of Health & Safety at Work Regulations 1999 place a duty on employers to undertake a suitable and sufficient assessment of the risks to the health and safety of their employees, to which they are exposed whilst at work in order to identify the measures that need to be taken to comply with health and safety legislation.

In addition, the Regulations identify two groups of workers; new and expectant mothers and young persons; for whom a specific risk assessment must be undertaken, or an existing risk assessment must be reviewed in order to identify any additional control measures that may need to be taken.

A “new or expectant mother” is taken to mean an employee who is pregnant; who has given birth within the previous six months; or who is breast-feeding.

When a member of staff notifies the School in writing that she is any of the above, then a specific risk assessment must be carried out to cover the activities and tasks that person undertakes and any specific hazards that may be involved during the course of her work.

Further advice can be found in the following documents available on the HSE website www.hse.gov.uk:

HSE INDG373(rev2)- New and expectant mothers who work, A brief guide to your health and safety.

3.24 Noise at Work

The Control of Noise at Work Regulations 1992 are in place to ensure that worker’s hearing is protected from excessive noise at their place of work, which could cause them to lose their hearing and/or suffer from tinnitus.

It is the responsibility of the employer to assess and identify measures to eliminate or reduce risks from exposure to noise. Where the risks are low, the actions taken may be simple and inexpensive, but where the risks are high, they should be managed using a prioritised noise-control action plan.

As a rule, in this school, noise will be considered to be a hazard if:

- Staff have to raise their voices to carry out a normal conversation when about 2 m apart for at least part of the day
- Staff use noisy powered tools or machinery for more than half an hour each day
- Staff are exposed to high levels of noise for a significant part of their working day.

Where noise is perceived to be a risk to School staff, School will:

- Assess the risks to employees from noise at work;
- Take action to reduce the noise exposure that produces those risks;

- Provide employees with hearing protection if the noise exposure cannot be reduced enough by other methods;
- Make sure the legal limits on noise exposure are not exceeded;
- Provide employees with information, instruction, training and health surveillance

Further information and advice about noise at work can be found on the HSE website <http://www.hse.gov.uk/noise>

3.25 Personal Protective Equipment

The Personal Protective Equipment Regulations 1992 are designed to protect people from risks to their health.

The Personal Protective Equipment should be properly assessed before use to ensure it is suitable; be maintained and stored properly. Employees should be provided with instructions and training on how to use it safely and supervised to ensure the equipment is being used correctly.

PPE is defined in the Regulations as “all equipment (including clothing protection against the weather) which is intended to be worn or held by a person at work and which protects them against one or more risks to his health or safety”, e.g. safety helmets, gloves, eye protection, high-visibility clothing, safety footwear and safety harnesses.

All Personal Protective Equipment should be identified through risk assessment, but only if the control measures cannot be reduced by other means.

3.26 Playground / Play Equipment

The Health and Safety at Work Act 1974 requires employers to ensure, not only the health, safety and welfare of employees, but also others who may be affected (i.e. pupils).

The Provision of Work Equipment Regulations requires all work equipment to be suitable for purpose, maintained in a safe working order, and regularly inspected to ensure it remains so. Although playground equipment would not strictly be regarded as work equipment, this school recognises that it has a duty of care to all pupils and this includes ensuring the equipment provided for their use is suitable, maintained in a safe working order, and regularly inspected to ensure it remains so.

The playground and all playground equipment are visually checked on a daily basis

and a termly inspection is also undertaken. These checks are recorded and signed by the person responsible for undertaking them.

The responsible person for maintaining the playground and playground equipment is Tracy Lynes, ASBM.

Records of playground and playground inspections are located in.
ASBM Office.

3.27 Ponds

The Management of Health & Safety at Work Regulations 1999 require that employers assess the risks to the health and safety of their employees, and others who may be affected by their acts or omissions.

The risk assessment should be undertaken by a competent person and identify the significant risks and the control measures to reduce those risks to an acceptable level. The assessment should be regularly reviewed.

The person responsible for undertaking, and regularly reviewing a risk assessment of the pond is Tracy Lynes.

3.28 Risk Assessment

The Management of Health and Safety at Work Regulations 1999 require employers to make a suitable and sufficient assessment of the risks to health and safety of employees to which they are exposed whilst at work, and any others who may be affected by their undertaking.

The responsibility for carrying out risk assessments lies with the following staff:

Tracy Lynes, any teachers leading on Educational Visits and Sports Coaches for specific specialist activities.

The risk assessment must be recorded, and reviewed if it is no longer valid, if there have been significant changes in the matters to which it relates, or annually, whichever is the sooner.

Tracy Lynes will be responsible for ensuring that risk assessments are undertaken, recorded and reviewed within the School.

Copies of current risk assessments are located in the ASBM office.

Employees' have a duty to cooperate with their employer when they are conducting risk assessments and for cooperating with them in implementing any remedial action or control measures to reduce the risk.

Staff involvement and consultation will be ensured during the risk assessment process.

3.29 Safety, Signs and Signals

The Health and Safety (Safety Signs and Signals) Regulations 1996 places duty on employers to use and maintain appropriate health and safety signs, in order to make persons aware of risks, where the risk to health and safety cannot be avoided or adequately controlled by other means.

This School will ensure that where the requirement for the posting of a safety sign has been identified, such signs are posted at suitable locations, conform to the relevant standards and are adequately maintained.

It is the responsibility of Tracy Lynes to ensure that health and safety signs are displayed and adequately maintained.

Staff will be provided with appropriate instruction, information and training in the use and understanding of safety signs, as applicable.

Staff should report missing or damaged safety signs to Tracy Lynes, ASBM.

Further information on safety signs and signals can be found on HSE website www.hse.gov.uk:

HSE L64 (Third edition) Published 2015 'Safety signs and signals- The Health and Safety (Safety Signs and Signals) Regulations 1996.

3.30 Security

Specific responsibility for school security is not set down in legislation. However, school security is related to health and safety, therefore whoever has responsibility for health and safety should consider what security measures are necessary to ensure, as far as reasonably practicable, the safety of the staff and pupils.

The Health and Safety Co-ordinator within the school may assume the responsibilities for school security. Alternatively, schools may wish to appoint a school security co-ordinator who will develop a knowledge and understanding of security issues within the premises.

Tracy Lynes, ASBM has responsibility for school security issues.

3.31 Smoking

The Smoke free Regulations were introduced in England to make virtually all enclosed public places and workplaces in England smoke free.

As a result, this School is a strictly no smoking School.

3.32 Slips and Trips

The Health & Safety at Work Act 1974 requires employers to ensure the health, safety and welfare of employees and others who may be affected. The Act also requires the provision of a place of work that is maintained in a safe condition, and a means of access and egress that is safe and without risk.

This School recognises that good housekeeping is essential to preventing slip and trip accidents. The following measures will be taken to ensure good housekeeping:

Formal recorded workplace inspections will be undertaken by

Tracy Lynes on a six monthly basis.

All staff are responsible for undertaking informal daily checks of their own work areas.

Where action is identified during workplace inspections but cannot be implemented immediately, interim measures will be taken and an action plan produced to outline when the action will be implemented, who will be responsible for ensuring it is implemented and the estimated completion date.

Copies of the action plan and formal workplace inspection records will be kept by

Tracy Lynes at ASBM office.

3.33 Traffic Management

The Workplace (Health, Safety and Welfare) Regulations require that workplaces are

organised to ensure that vehicles and pedestrians can move around safely. This includes organisation of traffic routes to enable pedestrians and vehicles to circulate safely.

A risk assessment of traffic management within the school grounds and immediate vicinity should be carried out.

A copy of the traffic management risk assessment/plan is located in ASBM Office.

Further information on workplace transport is available from www.hse.gov.uk/workplacetransport/

3.34 Personal Safety of Staff

The Health and Safety at Work Act 1974 places a legal duty on employers to ensure the health, safety and welfare of employees at work.

The Management of Health and Safety at Work Regulations 1999 places duty on employer to consider and assess the risks to employees. This would include the risk of reasonably foreseeable violence.

Violence may be defined as any incident in which a person is abused, threatened or assaulted, either physically or verbally, in circumstances relating to their work.

Physical or verbal abuse of staff within this school will not be tolerated and the School fully endorses the LBR Personal Safety of Staff Policy and procedures. A risk assessment will be undertaken to identify and minimise the risk to staff from potentially violent persons or situations.

Staff will, where appropriate, receive information, instruction and training on the risks from potential violence and aggression, and how to avoid or minimise potential violent or aggressive situations.

All acts of physical or verbal abuse must be reported using the appropriate report procedures. See the relevant section of this policy for further information.

As an employer the school will support any employee who is assaulted or threatened in the course of their duties.

3.35 Waste including Waste Electrical & Electronic Equipment (WEEE) Regulations

All waste generated by this School will be disposed of responsibly.

General waste will be disposed of in the wheelie bins provided by the London Borough of Redbridge.

Any hazardous waste will be disposed of in accordance with the Hazardous Waste Regulations. This may be via the Corporate Facilities Management Team (SMADs) or through a specialist licensed contractor.

Any waste being stored on site must be stored in such a way so as not to pose a risk to staff or pupils.

Members of staff must not take waste in their own private vehicles or in any LBR vehicle unless they are a registered waste carrier (i.e. it is no longer possible to take waste directly to a municipal refuse site).

3.36 Work Equipment

The Provision and Use of Work Equipment Regulations (PUWER) apply to all types of work equipment. The Regulations generally apply to any equipment that is used by an employee at work, for example hammers, knives, ladders, drilling machines, circular saws, photocopiers, lifting equipment (including lifts) and motor vehicles.

In general terms the Regulations require that equipment provided for use at work be:

- Suitable for the intended use;
- Safe for use;
- Maintained in a safe condition;
- Used only by people who have received adequate information instruction and training;
- Inspected
- Accompanied by suitable safety measures, e.g. guards, markings, warnings

In addition to PUWER, the Management of Health and Safety at Work Regulations require employers to carry out suitable and sufficient risk assessment of the risks to which employees are exposed to at work including work equipment.

Defects should be reported to Tracy Lynes via Every hazard reporting.

All the equipment provided must only be used for its intended purpose.

Staff must not use work equipment unless they have received appropriate training and must use the equipment in an appropriate manner, according to the information received in training and instructions from their line manager. Students using the work equipment must be supervised at all times.

It is the responsibility of Tracy Lynes, ASBM to arrange staff training, and to ensure that records of staff training are maintained.

This School does not permit staff to undertake modifications to equipment.

Staff and pupils may not bring their own personal electrical appliances into the School/ unless they have permission from the Head Teacher.

The Health & Safety Co-ordinator can advise on how to have equipment checked.

When work equipment has reached the end of its working life or is no longer required it must be written-off in the asset register and then disposed of safely. Under no circumstances may equipment be sold or passed-on to a third party.

Further Information is available from "Provision and Use of Work Equipment Regulations 1998. Approved Code of Practice and guidance - L22"

3.37 Work Experience and Young Persons

Students on work placements/experience are regarded in health and safety law as employees and therefore must be provided with the same health, safety and welfare protection given to other employees.

Students who are under the age of 18, taking part in work experience/placements, are considered Young Persons under health and safety law. The Management of Health and Safety at Work Regulations 1999 require employers to specifically take account of young persons when carrying out their risk assessments.

If young persons have not previously been employed in the workplace, then existing risk assessments should be reviewed accordingly. The assessment of risks to 'young persons' must be carried out before their employment or work placement period begins.

Claire Ige, Assistant Head Teacher will be responsible for carrying out risk assessments and maintaining records. Significant findings will then be brought to the

attention of students on work experience, and the measures they need to take to avoid the risk before they work in the area.

The School will ensure that the parents/carers of children, i.e. those under minimum school leaving age (MSLA), are informed of the key findings of the risk assessment before the placement begins.

All young people and students on work experience will be provided with appropriate induction, information, instruction, training and supervision.

Any pupil undertaking work experience at this School will be given an induction, which will be recorded using the Work Experience Induction Checklist.

Completed checklists are located in C. Ige, AHT office

3.38 Working at Height

The Work at Height Regulations requires that, "every employer shall take suitable and sufficient action to prevent, so far as is reasonably practicable, any person falling a distance liable to cause personal injury'.

Under the Management of Health and Safety at Work Regulations 1999 the Employer has duties to undertake risk assessments including the duty to identify, assess and control risks on their premises.

This School will assess the risks from working at height and make plans to either avoid the work at height, or to do the work more safely.

Tracy Lynes, ASBM will be responsible for carrying out the risk assessment for each activity involving significant risk whilst working at height and maintaining the records.

Where work at height cannot be avoided suitable and appropriate work equipment will be provided. It will be inspected, tested and maintained on a regular basis by a competent person and records will be kept.

A termly inspection of equipment used to work at height will be carried out by Billy Ballard, Caretaker

This School has a Ladder Checklist and a TASS Checklist to record the inspection and

maintenance of ladders and/or other access equipment.

The checklists are located in ASBM Office and will be maintained by Tracy Lynes.

Staff using the equipment should carry out visual checks prior to every use. They must follow defined work procedures and safe systems of work whilst working at height. Any faulty equipment should be taken out of use immediately and the appropriate manager should be informed.

All staff members involved in working at height will be given full information, instruction and training in the use of any relevant equipment.

Further information can be found on HSE website www.hse.gov.uk/

Advice for teachers and classroom assistants is available in the HSE document "Keeping safe when working at height"

The HSE document "Practical guidance for schools on working at height"

HSE INDG455- Safe use of ladders and stepladders- a brief guide.

3.39 Workplace (Health, Safety & Welfare)-

Employers have a general duty under the Health and Safety at Work Act to ensure the health, safety and welfare of their employees at work, and others who are not employees but use their premises.

The Workplace (Health, Safety and Welfare) Regulations expand on these duties and are intended to protect the health and safety of everyone in the workplace and to ensure adequate welfare facilities are provided for people at work.

The Regulations require employers to make provision for the following:

- Maintenance of a safe workplace, equipment and systems of work;
- Suitable and sufficient ventilation, lighting and indoor temperature;
- A clean workplace and furnishings with easy to clean surfaces;
- Sufficient work space with suitable work stations and seating;
- Floors and traffic routes of suitable condition and free from damage or hazards;
- The prevention of people falling from height, or being struck by falling objects;
- Windows (and other transparent/translucent surfaces) made of safe materials, that do not expose people to risks to their health & safety, and are able to be cleaned safely;
- Traffic routes organised to allow pedestrians and vehicles to circulate in a safe manner;



- Suitable and sufficient toilets and washing facilities;
- An adequate supply of drinking water;
- Accommodation for personal or work clothing, and adequate facilities for changing clothing where necessary;
- Facilities for rest and to eat meals.

This School will ensure that suitable arrangements are in place to cover these provisions, so far as is reasonable practicable. In order to monitor this, a regular workplace inspection will be undertaken using a workplace H&S Inspection checklist.

Workplace inspections will be undertaken by Tracy Lynes on a six monthly basis..

Workplace inspection records will be kept by Tracy Lynes at ASBM office.

The responsibility for building and equipment maintenance lies with Tracy Lynes.

Any building or equipment defects or hazards should be reported to

Tracy Lynes using the Every hazard reporting system.

4 Access to Policy Statement

A copy of this statement is to be made available to all employees and others

5 Names of Key Staff

Designation	Name	Extension No
Head Teacher	Emiley Davies	1201
Deputy Head Teacher	Esther Jones	1112
Health & Safety Co-ordinator	Tracy Lynes	1104
COSHH Co-ordinator	Tracy Lynes	1104
Educational Visits Co-ordinator	Esther Jones	1112
Caretaker/ Site Manager	Billy Ballard	1206